

Project:

Type:

Quantity:

Note:

SKU#: LIN - 24V -     -     - 30K -    

### Description

A tubular frosted glass diffuser paired with a stamped steel back plate. The Lino Vanity adds contemporary styling to any space.

### Features

- Stamped Steel construction
- Frosted glass tube diffuser
- Rear-mounted driver fits inside standard 4" junction box
- Damp location rated
- JA8-2016 Listed



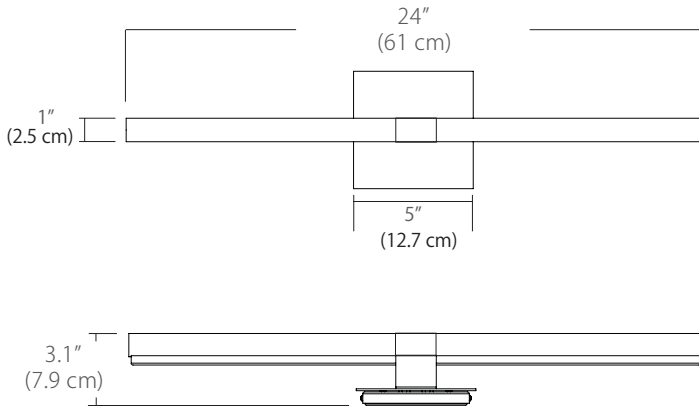
### Specifications

- Color Rendering Index: 90CRI
- LED Color Temperature: 3000K (Standard)
- Fixture Wattage: 20W
- Input Voltage: 120VAC 50/60Hz
- Delivered Lumens: 1609 Lm (measured at 3000K)
- Fixture Weight: 2.8 lb. (1.4 kg)
- Standard Backplate: S4 - 4.6" x 4.6" x .5"
- Dimming: TRIAC dimmable (Standard)
- For recommended dimmers, see <http://blackjacklighting.com>

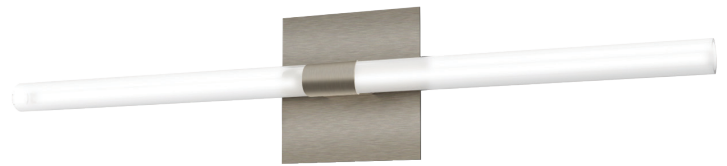
### Options

- Upgradable to 120-277V input driver with Universal Dimming
- Available in 2700K, 3000K, 3500K, and 4000K Color Temperatures
- Special Order Paint Finishes: BL - Matte Black, BZ - Bronze, or SG - Satin Gold
- Optional Deep Backplate (DB) - 4.6" x 4.6" x 1.3"

### Dimensions



(Shown above with Standard S4 Backplate)



**Shown Above:**  
LIN-24V-SN-12T-30K-S4

### ORDERING GUIDE

**Family**

**LIN**

LIN Lino

**Size**

**24V**

24V 24" Vanity

**Finish**

- Standard**  
SN Satin Nickel  
**Special Order**  
BL Matte Black  
BZ Bronze  
SG Satin Gold

**Volts/Dimming**

- Standard**  
12T 120VAC TRIAC Dimming Only (All Backplates)  
**Special Order**  
27U 120-277VAC Universal Dimming (Deep Backplate Only)  
27Z 120-277VAC (0-10V Dimming Only) (Shallow S4 Backplate Only)

**Color Temp.**

**30K**

- 30K** 3000K (Default)  
**27K** 2700K  
**35K** 3500K  
**40K** 4000K

**Backplate**

- Standard**  
S4 4.6" Shallow Backplate (Standard) (Driver located inside junction box)  
**Special Order**  
DB Deep Backplate (Driver located in backplate)

**Example:** LIN-24V-PC-12T-30K-S4

## Finishes

<p><b>Finish</b></p> <div style="background-color: #f0f0f0; width: 20px; height: 20px; margin-bottom: 5px;"></div> <p>SN</p> <p>BL</p> <p>BZ</p> <p>SG</p>	
	<p><b>SN - Satin Nickel</b>      <b>BL - Matte Black</b>      <b>BZ - Bronze</b>      <b>SG - Satin Gold</b></p> <p><b>Standard Finish</b>      <b>Special Order Powder Coat Finishes</b></p>

## Volts/Dimming

<p><b>Volts/Dimming</b></p> <div style="background-color: #f0f0f0; width: 20px; height: 20px; margin-bottom: 5px;"></div> <p>12T</p> <p>27U</p> <p>27Z</p>	<p><b>12T:</b> Input: 120V , Dimming: TRIAC (<b>Standard</b>)</p> <p><b>27U:</b> Input: 120-277V , Dimming: TRIAC/ ELV/ 0-10V (Deep Backplate Only) (<b>Special Order</b>)</p> <p><b>27Z:</b> Input: 120-277V , Dimming: 0-10V (Shallow S4 Backplate Only) (<b>Special Order</b>)</p>
--	---

## Color Temperature

<p><b>Color Temp.</b></p> <div style="background-color: #f0f0f0; width: 20px; height: 20px; margin-bottom: 5px;"></div> <p>27K</p> <p>30K</p> <p>35K</p> <p>40K</p>	<p><b>27K</b> - 2700K</p> <p><b>30K</b> - 3000K (<b>Default</b>)</p> <p><b>35K</b> - 3500K</p> <p><b>40K</b> - 4000K</p>
---	--

## Backplates

<p><b>Backplates</b></p> <div style="background-color: #f0f0f0; width: 20px; height: 20px; margin-bottom: 5px;"></div> <p>S4</p> <p>DB</p>	
	<p><b>Standard Backplate</b>      <b>Special Order Backplate</b></p> <p><b>S4</b> - 4.6" Shallow Backplate (4.6" H, 4.6" W, .5" D) - Driver located inside junction box</p> <p><b>DB</b> - Deep Backplate (4.6" H, 4.6" W, 1.3" D) - Driver located inside backplate</p>