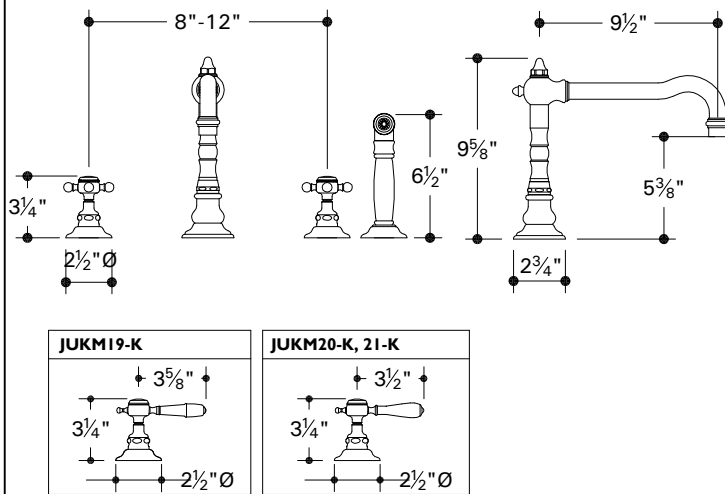


JUKM18 (cross handles)
JUKM19-K (metal lever handles)
JUKM20-K (white porcelain lever handles)
JUKM21-K (black porcelain lever handles-MTO)



IMPORTANT

- To ensure this product is installed properly, you must read and follow these guidelines.
- The owner/user of the faucet must keep this information for future reference.
- Be sure your installation conforms to local codes.
- Refer to the specification and assembly drawings attached. Faucet is sold partially assembled but shown fully disassembled for illustrative and service purposes only.
- Inspect this product to assure you have all parts required for proper installation.
- Use only a strap wrench or protected/smooth-jaw wrench on any finished surface.
- If possible, install the faucet assembly on the sink or mounting surface before setting.
- Do NOT use putty during this installation.

SIDE VALVE INSTALLATION

1. Disassemble the index assembly (1-5) as 1 unit from the handle hub (8) by lifting the ring (1) off of the handle.
2. Insert a bladed screw driver into the handle and loosen the screw (6) then pull the handle off the cartridge (11).
3. Unthread the cover (9) from the cartridge then base escutcheon (10) from the side valve (15). Remove 1 sealing gasket (12) as an upper seal. Do NOT remove the other sealing gasket or hardware (12-14).
4. Insert the side valve into the hole in the mounting surface so at least 1" of threads are exposed.
5. Install the upper sealing gasket onto the side valve then thread the base escutcheon(10) onto the side valve until it contacts the mounting surface.
6. Thread the cover(11) onto the cartridge hand tight at which point it will stop.
7. Unthread the base escutcheon until it contacts the cover which will assure proper side valve height.
8. Tighten the nut (14) up against the underside of the mounting surface to secure the side valve.
9. Reinstall the handle and index assembly.
10. Repeat these steps to install the second side valve.

SPOUT INSTALLATION

11. Remove the tee/diverter assembly (30-35) and spout attachment hardware (29a(1) - 29c) from the spout.
12. Insert the spout assembly (19-29a(1), 36,37) through the spout hole of the mounting surface.
13. Place 1 rubber spout gasket (29a) then spout washer (29b) and nut (29c) onto the spout shank (29).
14. Tighten the nut to secure the spout to the mounting surface.

These guidelines have been prepared for the professional contractor to aid in the installation of: **JULIA FOUR HOLE KITCHEN MIXER WITH SPRAY, CROSS HANDLES (JUKM18) & LEVER HANDLES (JUKM19-K, JUKM20-K, JUKM21-K)** All dimensions are based on original specification and are subject to change and variation. Please consult your Design Associate for current specifications.

W A T E R W O R K S

15. Reinstall the tee/diverter assembly then connect each of the supply hoses to the adjacent side valve making sure they are not pinched/kinked.

RINSE INSTALLATION

16. Remove the rinse return attachment hardware (43a(1) - 43c) from the return shank (43)
17. Insert the return assembly (10, 43a(1), 43) through the hole of the mounting surface.
18. Place 1 rubber gasket (43a) then spout washer (43b) and nut (43c) onto the return shank (43).
19. Tighten the nut to secure the return to the mounting surface.
20. Insert the hose and rinse assembly (39-42, 44-44b) into the rinse return.
21. Install a washer (44c) into the hose end then thread the hose onto the tee (35).
22. Connect the side valves (15) to the water supply valves (not supplied).

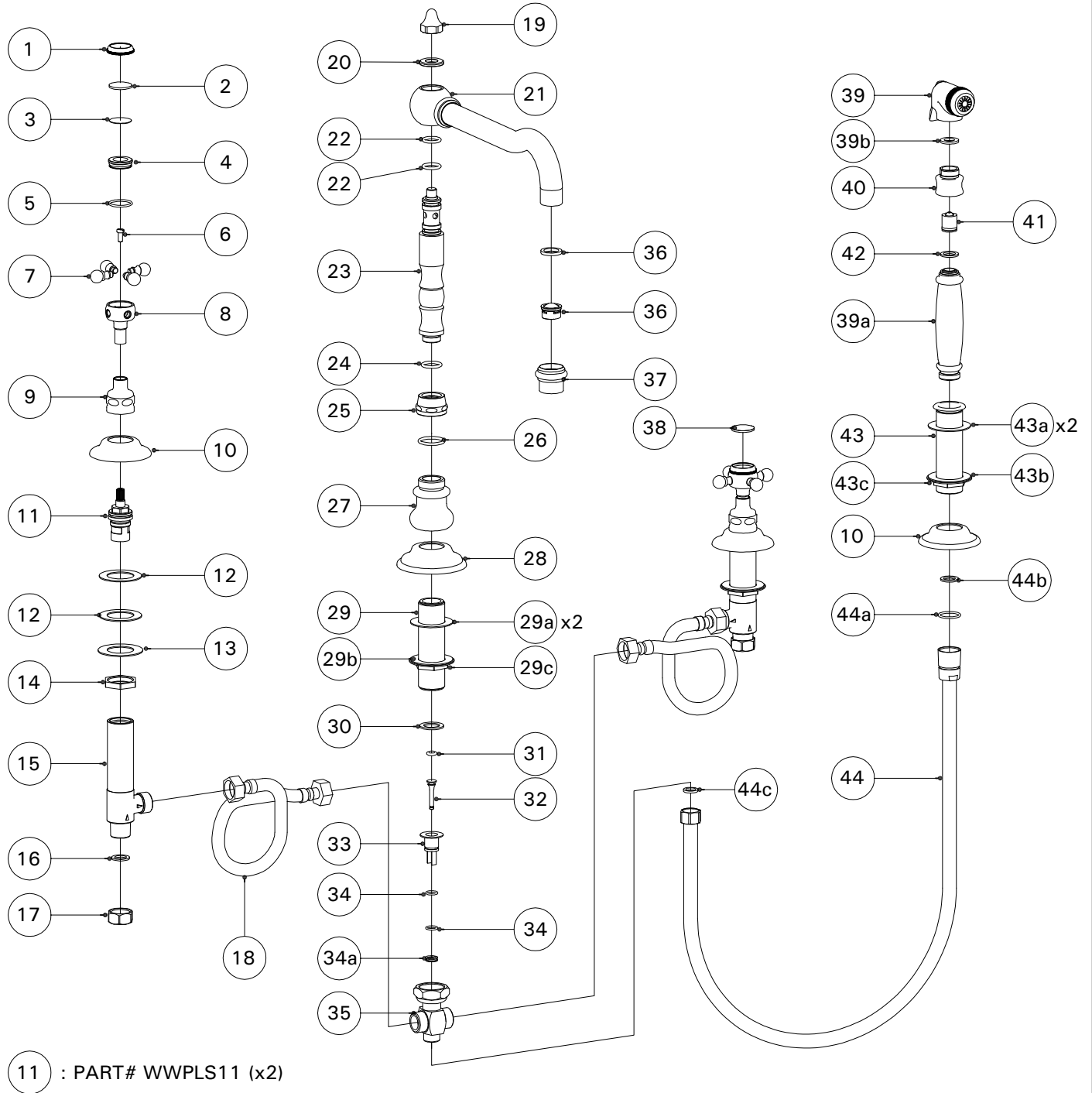
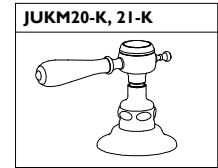
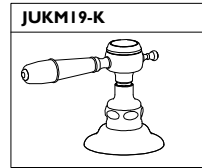
INSPECT THE INSTALLATION

23. Unscrew and remove the aerator assembly (36-37) which includes a flow restrictor.
24. Carefully open the hot and cold valves to flush out any debris in the supply lines.
25. Operate the rinse by pressing the thumb lever. If the rinse does not shut off completely, remove the nut on the face of the rinse. Rotate the slotted screw left or right then operate the thumb lever to verify adjustment. Repeat as needed.
26. Inspect all connections for leaks.
27. Close the valves and reinstall the aerator assembly.

If further assistance is required, please contact Product Support at 1-800-927-2120 (8am-7pm EST)

These guidelines have been prepared for the professional contractor to aid in the installation of **JULIA FOUR HOLE KITCHEN MIXER WITH SPRAY, CROSS HANDLES (JUKM18) & LEVER HANDLES (JUKM19-K, JUKM20-K, JUKM21-K)** All dimensions are based on original specification and are subject to change and variation. Please consult your Design Associate for current specifications.

W A T E R W O R K S



These guidelines have been prepared for the professional contractor to aid in the installation of:
JULIA FOUR HOLE KITCHEN MIXER WITH SPRAY, CROSS HANDLES (JUKM18) & LEVER HANDLES (JUKM19-K, JUKM20-K, JUKM21-K) All dimensions are based on original specification and are subject to change and variation. Please consult your Design Associate for current specifications.

W A T E R W O R K S

PARTS TABLE		
ITEM NO.	DESCRIPTION	QTY.
1	INDICE TRIM RING	2
2	INDICE, HOT	1
3	INDICE PAD	2
4	INDICE RETAINER	2
5	O-RING	2
6	SCREW, HANDLE	2
7	HANDLE SPOKE	8
8	HANDLE HUB	2
9	COVER	2
10	ESCUTCHEON, FLAT	3
11	CARTRIDGE/STEM	2
12	WASHER, RUBBER	4
13	WASHER, METAL	2
14	SIDE VALVE NUT	2
15	SIDE VALVE	2
16	WASHER	2
17	INLET NUT	2
18	SUPPLY HOSE	2
19	NUT FINISHED	1
20	WASHER, FINISHED	1
21	SPOUT	1
22	O-RING	2
23	SPOUT POST	1
24	O-RING	1
25	LOWER SPOUT NUT	1
26	O-RING	1
27	SPOUT BASE	1
28	FLAT ESCUTCHEON	1
29	SPOUT SHANK	1
29a	GASKET	1
29b	WASHER	1
29c	NUT	1
30	WASHER, RUBBER	1

PARTS TABLE		
ITEM NO.	DESCRIPTION	QTY.
31	O-RING	1
32	DIVERTER SHAFT	1
33	DIVERTER BODY	1
34	O-RING	2
34a	BUSHING	1
35	TEE	1
36	AERATOR/FLOW RESTRICTOR- 2.2 GPM W/WASHER	1
37	HOUSING	1
38	INDICE, COLD	1
39	RINSE HEAD	1
39a	RINSE HANDLE	1
39b	WASHER	1
40	RINSE HEAD BASE	1
41	CHECK VALVE	1
42	WASHER	1
43	RINSE RETURN SHANK	1
43a	GASKET, RUBBER	2
43b	SPOUT WASHER	1
43c	NUT	1
44	HOSE	1
44a	O-RING	1
44b	WASHER	1
44c	WASHER	1

These guidelines have been prepared for the professional contractor to aid in the installation of:
JULIA FOUR HOLE KITCHEN MIXER WITH SPRAY, CROSS HANDLES (JUKM18) & LEVER HANDLES (JUKM19-K, JUKM20-K, JUKM21-K) All dimensions are based on original specification and are subject to change and variation. Please consult your Design Associate for current specifications.

W A T E R W O R K S