



Cube

VCS 60C

inch 60.25 x 22 x 2 mm 1530 x 559 x 51

■ **interior dimensions**

inch 20 x 14 x 3.375 mm 508 x 356 x 86

■ **weight**

lb - 42 kg - 19

■ **installation**

semi-recessed

■ **accessory**

nil

■ **overflow**

without overflow : VCS 60C

built-in overflow : VCS 60C-O

polished chrome or brushed nickel

■ **faucet hole**

mono, 8" c/c no hole
or custom drillings

■ **material**

WETMAR™, True High Gloss™
or matte finish

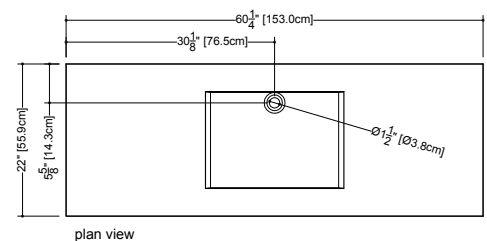
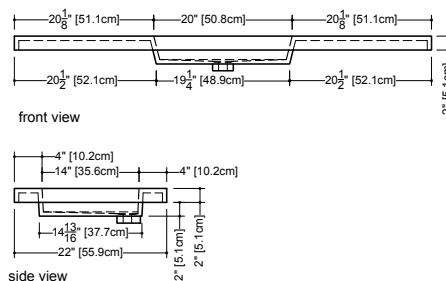
■ **color**

white

■ **codes/standards applicable**

IAPMO-ANSI Z124.1 - IAPMO-ANSI Z124.3

CSA B 45.0 - CSA B45.4



WETSTYLE cannot be held responsible for any technical errors and reserves the right to make revisions without notice.

Approximate measurement.
The manufacturer accept 1/4" (6.35mm) variance.

www.WETSTYLE.CA - Montreal - Canada
Tel. 450.536.9000 - 1 888.536.9001 - Fax. 450.536.0202

